

0CNP2-M94700EN

Directions for the Parts Catalog.

1. The parts stipulated in this Parts Catalog are not necessarily standard equipped parts.
2. Parts may change without prior notice.
3. The following is an example of the Parts Catalog format.

REF.	LEV.	PARTS NO.	DESCRIPTION	Q'TY						I	R
				(A)	(B)	(C)	(D)	(E)	(F)		
1	1	729595-51390	FUEL INJECTION PUMP	1	1	1	1	1			1
1-1	1	729595-51391	FUEL INJECTION PUMP	1	1	1	1	1		N	1
		(A=E00185) (B=E00200)									
3	2	26022-060162	SCREW M 6X 16	9	9	9	9	9			
3-1	2	26022-060162	SCREW M 6X 16	4	4	4	4	4		K	
		(A=E00156) (B=E00156) (C=E00156) (D=E00156) (E=E00156)									
4	2	129470-51040	CAMSHAFT	1	1	1	1	1			
5	2	122710-51050	BEARING, ROLLER	2	2	2	2	2			
6	2	129470-51060	RETAINER	1	1	1	1	1			

Remarks
(1) BOOST COMPEMSATOR TYPE. OPTIONAL PART, TO E00155,(4JH-DT, 4JH-DTZ

① Ref. No.

The Ref. No. listed may not be in accordance with the illustration Ref. No.

(Ex.) Illustration No.

List Ref No.

1

1

(Before change)

1-1

(After change)

For interchangeable symbols N, R and K, illustrations for new parts may be abbreviated.

② Lev. (Level)

Level indication

The numbers below indicate the level of relativity towards the main part.

1 ----- Main parts (Assembly parts)

2 ----- Sub component included in " 1 ".

3 ----- Sub component included in " 2 ".

Note) Parts that are not for sale are partially illustrated but not listed.

③ Interchangeability Mark

When a part change takes place, one of the following interchangeability symbols is indicated beside the part.

Symbol	Interchangeability	Contents note
N	Old $\begin{matrix} \leftarrow \text{Yes} \\ \text{No} \rightarrow \end{matrix}$ New	New Part is interchangeable for Old Part but Old Part is not interchangeable for New Part.
Q	Old $\begin{matrix} \leftarrow \text{No} \\ \text{Yes} \rightarrow \end{matrix}$ New	New Part is not interchangeable for Old Part but Old Part is interchangeable for New Part.
R	Old $\begin{matrix} \leftarrow \text{Yes} \\ \text{Yes} \rightarrow \end{matrix}$ New	New/ Old Parts are both interchangeable.
S	Old $\begin{matrix} \leftarrow \text{No} \\ \text{No} \rightarrow \end{matrix}$ New	New/ Old Parts are both not interchangeable.
W		Part discontinued.
Z		Part newly added.
F		Not interchangeable by a single part but interchangeable together with related parts.
K		Changes only for used parts quantities.

④ Effective Machine No.

When a part changes, the effective Machine No. will be indicated in the (A)-(F) column.

Product Symbol	Product No.	Product Symbol	Product No.
C	Clutch No. Compressor No.	F	Machine No. (Agricultural Equip.)
D	Drive No.	M	Machine No.
E	Engine No.	Note 1)	Date

Note 1) A date may follow the symbol. (Ex.) 1996.01

Note 2) " XXX " are for parts that could not be predicted or for engine models that could not be identified.

Note 3) (A=E00185) is the E (Engine Serial Number) for the column (A) model (in this case 4JH-DT) after the parts design change.

⑤ Remarks Mark

Figures or alphabets (symbols) are entered in the remarks column.

The comments (remarks) on parts that are indicated at the bottom of the illustration are the same symbols as those stated above.

TABLE OF DETAILS OF SPECIFICATIONS

DIVISION	SPECIFICATIONS	Platform Type	Starter Type
		Manual Dump Platform	Recoil Starter
A	MCG91	○	○

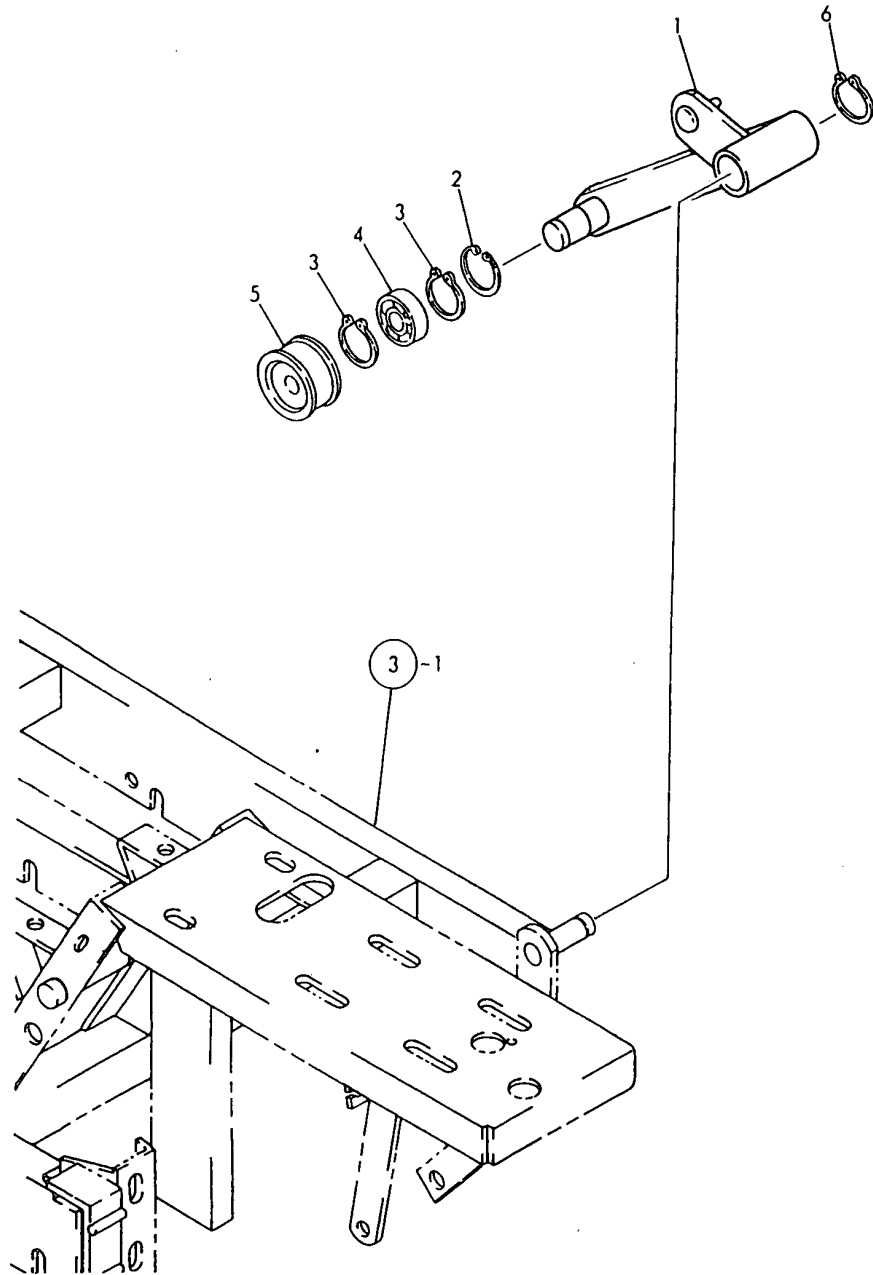
Contents

Fig. No.	Fig. Name
PULLEY & TENSION SECTION	
1.	TENSION ARM
2.	PULLEY
FRAME SECTION	
3.	BODY FRAME
TRAVELING SECTION (1)	
4.	IDLER
5.	TRACK ROLLER
CONTROL SECTION	
6.	HANDLE
7.	TRAVEL LEVER
8.	BRAKE LEVER
9.	MAIN CHANGE LEVER
10.	SIDE CLUTCH LEVER
PLATFORM CARRIER SECTION	
11.	PLATFORM CARRIER
TOOLS,ACCESSORIES & LABELS SEC	
12.	LABELS
13.	TOOLS & ACCESSORIES

Fig. No.	Fig. Name
CONTROL SECTION	
14.	DEADMAN LEVER(ADD.ITEM
TOOLS,ACCESSORIES & LABELS SEC	
15.	LABELS(ADD.ITEM

Fig.1. TENSION ARM

1. TENSION ARM

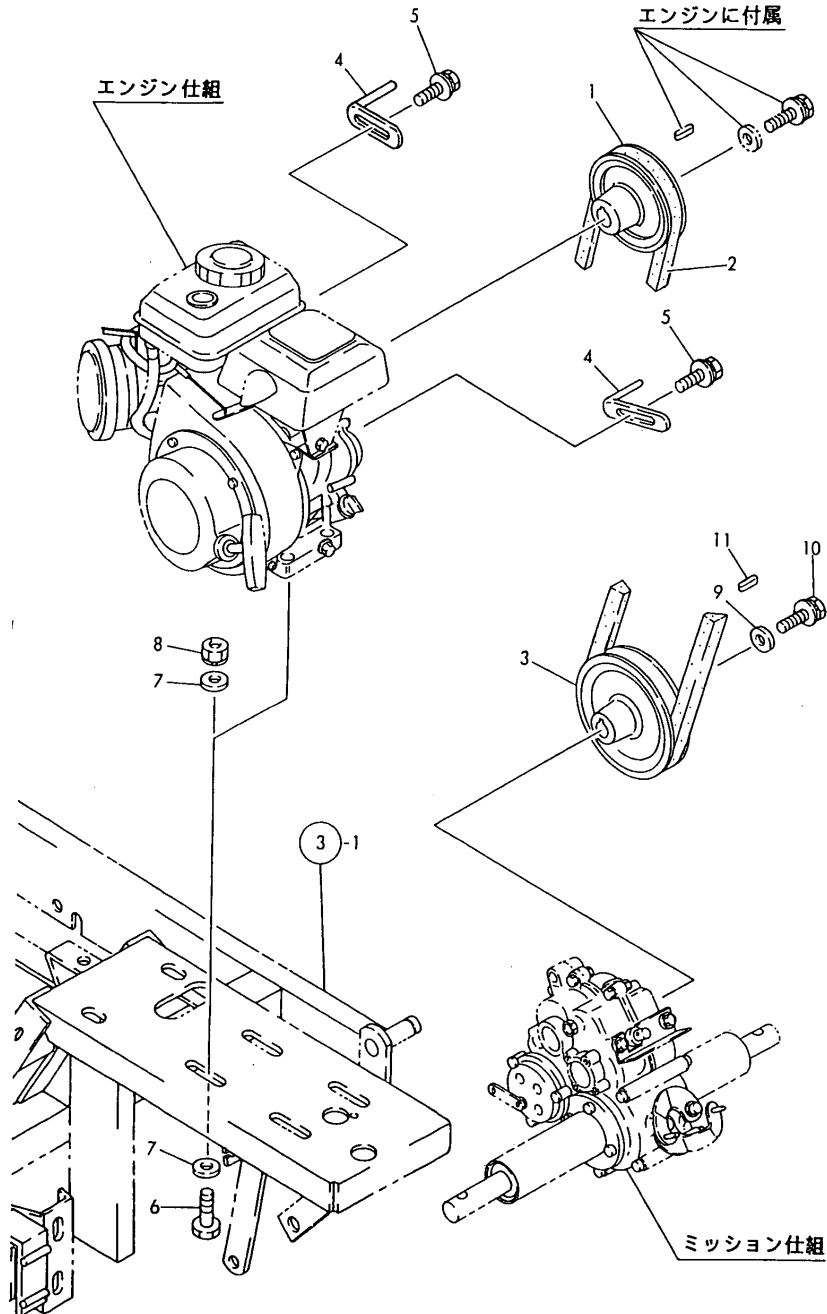


(A)=MCG91(-PQ(R)
 (B)=MCG91(-PQ(MC2)
 (C)=
 (D)=
 (E)=
 (F)=

No.	Lev.	Parts No.	Description	Q'ty						I	R
				(A)	(B)	(C)	(D)	(E)	(F)		
1	1	1N3501-22000	ARM A,TENSION	1	1						
2	1	22252-000350	RING, 35	1	1						
3	1	22242-000150	RING, 15	2	2						
4	1	24104-062024	BEARING, BALL 6202UU	1	1						
5	1	1N1430-22070	ROLLER,TENSION	1	1						
6	1	22242-000160	RING, 16	1	1						

Fig.2. PULLEY

2. PULLEY



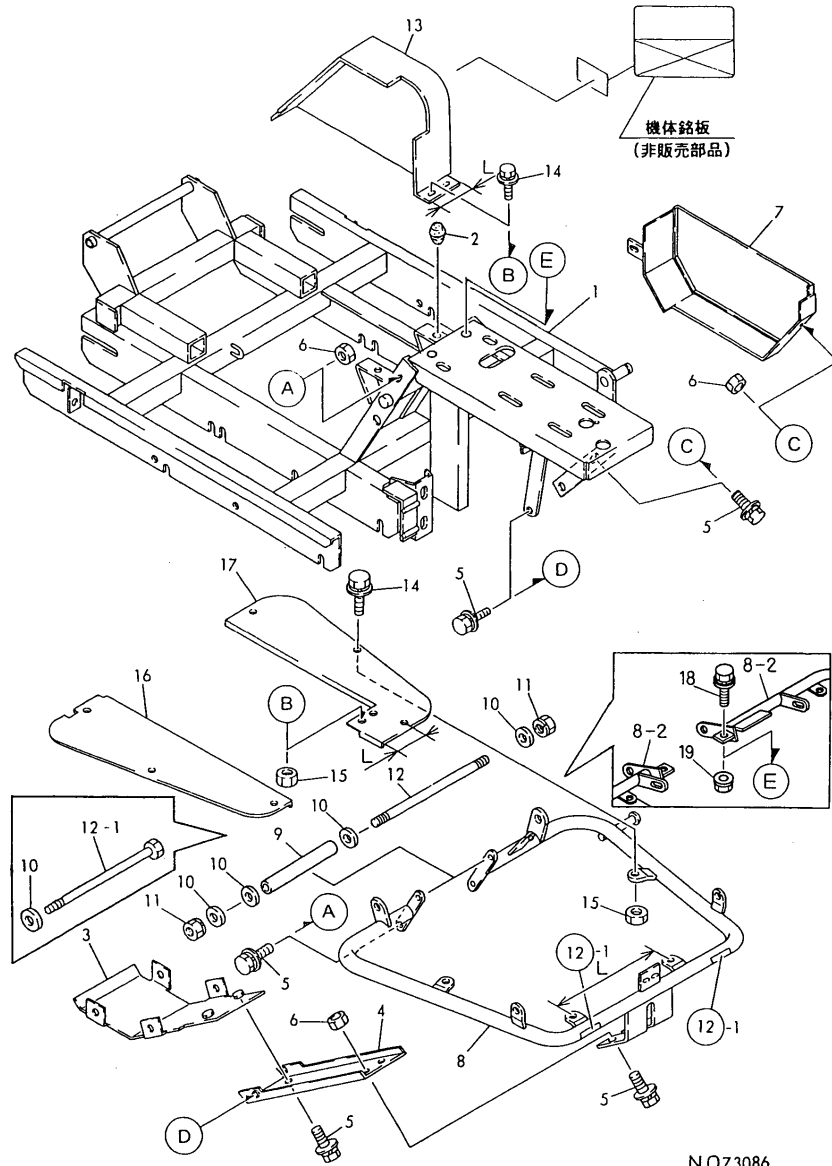
(A)=MCG91(-PQ(R)
 (B)=MCG91(-PQ(MC2)
 (C)=

(D)=
 (E)=
 (F)=

No.	Lev.	Parts No.	Description	Qty						I	R
				(A)	(B)	(C)	(D)	(E)	(F)		
1	1	1N3501-21000	PULLEY,ENGINE	1	1						
2	1	25123-003201	V-BELT, B32H	1	1						
3	1	1N3501-21010	PULLEY,TRANSMISSION	1	1						
4	1	1N1291-22020	GUARD 40,BELT	2	2						
5	1	26018-080164	BOLT M 8X 16	2	2						
6	1	26116-080452	BOLT, M8X 45 PLATED	4							
6-1	1	26106-080452	BOLT, M8X 45 PLATED	4	4						N
		(A=FXXXXXX)									
7	1	22137-080000	WASHER, 8	8	8						
8	1	26051-080002	NUT, M8	4	4						
9	1	1N1240-21040	WASHER	1	1						
10	1	26016-060164	BOLT 6X16 W/L.W.	1	1						
11	1	22550-050251	KEY, 5X 25	1	1						

Fig.3. BODY FRAME

3. BODY FRAME



NO73086

Remarks

- (1) REF. NO.8 HAS L=273 MM WHILE REF. NO.8-1 HAS L=223 MM.
- (2) REF. NO.17 HAS L=82 MM WHILE REF. NO.17-1 HAS L=32 MM.

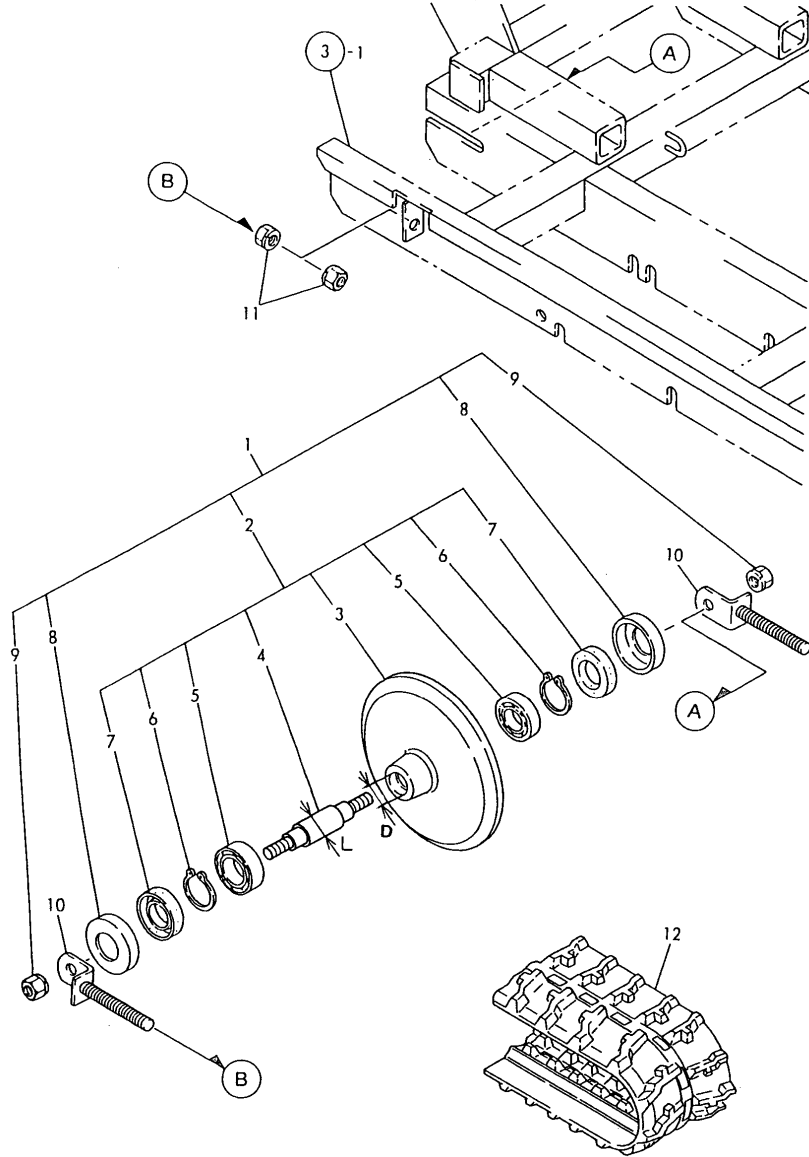
(A)=MCG91(-PQ(R)
(B)=MCG91(-PQ(MC2)
(C)=

(D)=
(E)=
(F)=

No.	Lev.	Parts No.	Description	Q'ty						I	R
				(A)	(B)	(C)	(D)	(E)	(F)		
1	1	1N3501-31000	FRAME,BODY	1	1						
2	1	1N1101-44040	RUBBER,STOPPER	1							
2-1	1	1N1101-44040	RUBBER,STOPPER	2	2						K
(A=F010452)											
3	1	1N3500-58130	PROTECTOR	1	1						
4	1	1N3501-58090	GUARD,UNDER	1	1						
5	1	26018-080204	BOLT M 8X 20	9	9						
6	1	26367-080002	NUT, M8	7	7						
7	1	1N3501-58041	COVER A,UNDER	1							
7-1	1	1N3501-58300	COVER, UNDER *NH282M	1	1						S
(A=F019180)											
8	1	1N3501-54000	STEP	1							
8-1	1	1N3501-54001	STEP	1							S 1
(A=F010151)											
8-2	1	1N3501-54002	STEP	1	1						S
(A=F017334)											
9	1	1N1550-54100	PIPE (C)	1							Z
(A=F017334)											
10	1	22137-100000	WASHER, 10	4							
10-1	1	22137-100000	WASHER, 10	3							K
(A=F010529)											
10-2	1	22137-100000	WASHER, 10	3							Z
(A=F017334)											
11	1	26051-100002	NUT, M10	2							
11-1	1	26051-100002	NUT, M10	1							K
(A=F010529)											
11-2	1	26051-100002	NUT, M10	1							Z
(A=F017334)											
12	1	1N3500-54090	BOLT,STAY	1							
12-1	1	26117-101902	BOLT, M10X190 PLATED	1							S
(A=F010529)											
12-2	1	26117-101902	BOLT, M10X190 PLATED	1							Z
(A=F017334)											
13	1	1N3501-58120	COVER,PULLEY	1	1						
14	1	1N1291-58080	BOLT 6X16 W/P&SW.	9	9						
15	1	26367-060002	NUT, M6	8	8						
16	1	1N3501-54030	STEP L	1	1						
17	1	1N3501-54040	STEP R	1							
17-1	1	1N3501-54041	STEP R	1	1						S 2
(A=F010151)											
18	1	26018-080204	BOLT M 8X 20	2	2						W
(A=F017334)											
19	1	26367-080002	NUT, M8	2	2						W
(A=F017334)											

Fig.4. IDLER

4. IDLER



Remarks
 (1)REF. NO.4 HAS L=17 MM WHILE REF.
 NO.4-1 HAS L=15 MM.
 (2)REF. NO.3 HAS D=35 MM WHILE REF.
 NO.3-1 HAS D=32 MM.

(A)=MCG91(-PQ(R
 (B)=MCG91(-PQ(MC2
 (C)=

(D)=
 (E)=
 (F)=

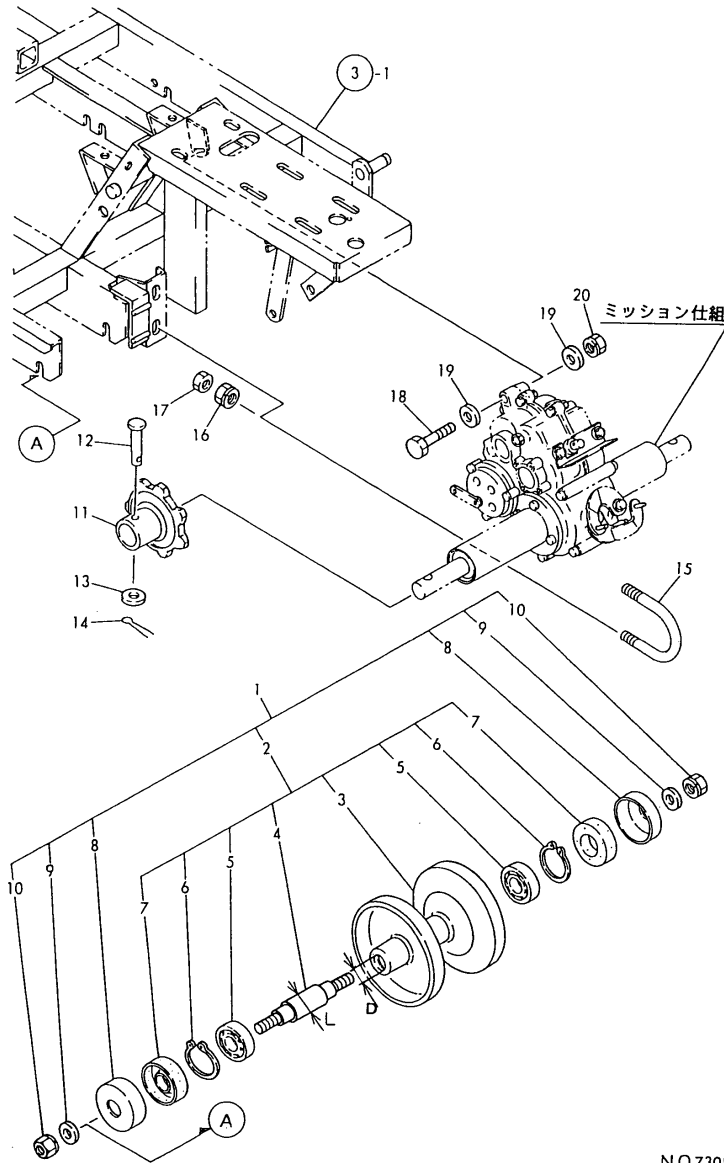
No.	Lev.	Parts No.	Description	Q'ty						I	R
				(A)	(B)	(C)	(D)	(E)	(F)		
1	1	7N1292-35010	FLOAT RING SET	2							
1-1	1	7N3501-35010	FLOAT RING SET	2	2						S
(A=F010101)											
2	2	7N1292-35000	FLOAT RING ASSY.	2							
2-1	2	7N3501-35000	FLOAT RING ASSY.	2	2						S
(A=F010101)											
3	3	1N1292-35000	RING,FLOAT	2							
3-1	3	1N3501-35040	RING,FLOAT	2	2						S 2
(A=F010101)											
4	3	1N1292-35010	SHAFT	2							
4-1	3	1N3501-35020	SHAFT	2	2						S 1
(A=F010101)											
5	3	24101-060034	BEARING, BALL 6003	4							
5-1	3	24101-060024	BEARING, BALL 6002	4	4						S
(A=F010101)											
6	3	22242-000170	RING, 17	4							
6-1	3	22242-000150	RING, 15	4	4						S
(A=F010101)											
7	3	24421-173508	SEAL, OIL TC173508	4							
7-1	3	24421-153206	SEAL, OIL TC153206	4	4						S
(A=F010101)											
8	2	1N1091-36000	COVER,OIL SEAL	4	4						
9	2	26051-120002	NUT, M12	4	4						
10	1	1N1291-37000	SCREW,ADJUST	4	4						
11	1	26051-120002	NUT, M12	8	8						
12	1	1N3501-37000	CRAWLER 180X60X34,RB	2							
12-1	1	1N3501-37010	CRAWLER 180X60X34,RB	2	2						R
(A=F010452)											

Fig.5. TRACK ROLLER

(A)=MCG91(-PQ(R)
 (B)=MCG91(-PQ(MC2)
 (C)=

(D)=
 (E)=
 (F)=

5. TRACK ROLLER



NO73088

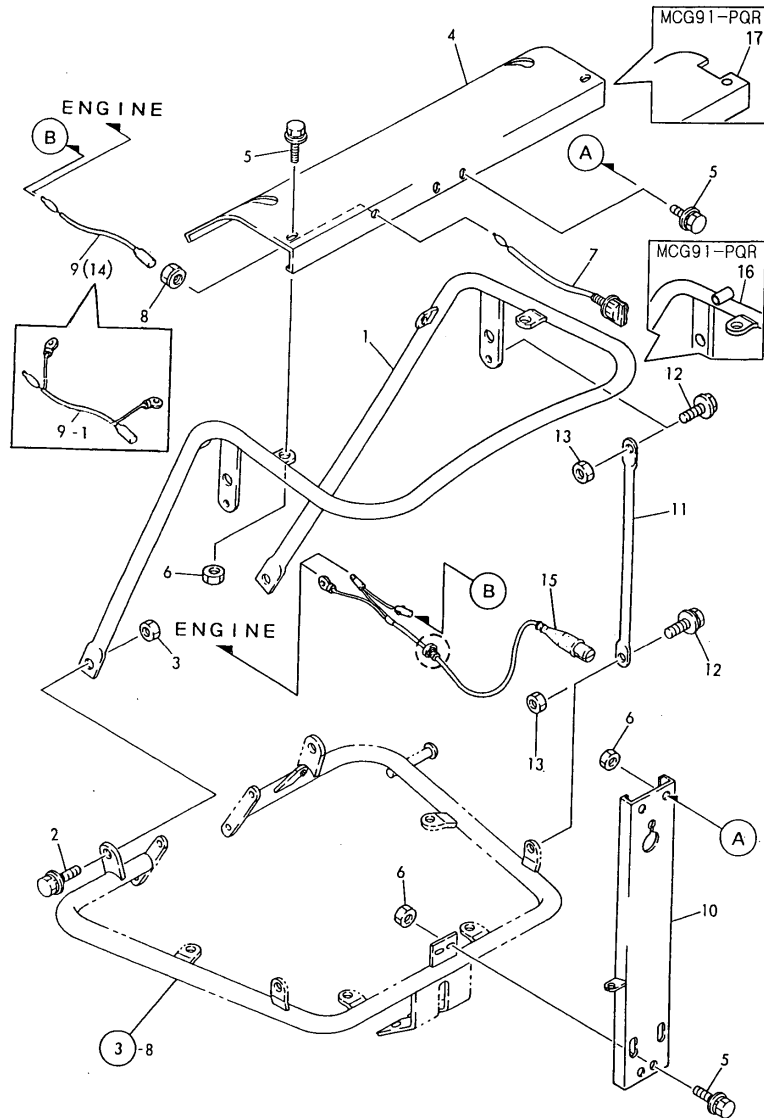
No.	Lev.	Parts No.	Description	Q'ty						I	R
				(A)	(B)	(C)	(D)	(E)	(F)		
1	1	7N3510-36010	LWR.TRANK ROLLER SET	4							
1-1	1	7N3501-36010	LWR.TRANK ROLLER SET	4	4						S
(A=F010101)											
2	2	7N3510-36000	LWR.TRANK ROLLER ASY	4							
2-1	2	7N3501-36000	LWR.TRANK ROLLER ASY	4	4						S
(A=F010101)											
3	3	1N1361-36000	ROLLER,LOWER TRANK	4							
3-1	3	1N3501-36010	ROLLER,LOWER TRACK	4	4						S 2
(A=F010101)											
4	3	1N3510-35010	SHAFT M12X166	4							
4-1	3	1N3501-35020	SHAFT	4	4						S 1
(A=F010101)											
5	3	24101-060044	BEARING, BALL 6004	8							
5-1	3	24101-060024	BEARING, BALL 6002	8	8						S
(A=F010101)											
6	3	22242-000200	RING, 20	8							
6-1	3	22242-000170	RING, 17	8	8						S
(A=F010101)											
7	3	24421-204208	SEAL, OIL TC204208	8							
7-1	3	24421-153206	SEAL, OIL TC153206	8	8						S
(A=F010101)											
8	2	1N1091-36000	COVER,OIL SEAL	8	8						
9	2	22137-120000	WASHER, 12	8	8						
10	1	26051-120002	NUT, M12	8	8						
11	1	1N1291-35000	SPROCKET	2	2						
12	1	1N1291-35020	PIN,AXLE	2	2						
13	1	22137-100000	WASHER, 10	2	2						
14	1	22417-250250	PIN, COTTER 2.5X25	2	2						
15	1	1N1210-35100	U-BOLT	2							
15-1	1	1N3501-35030	U-BOLT	2	2						R
(A=F017334)											
16	1	26052-100002	NUT, M10	4	4						
17	1	26757-100002	NUT, LOCK M10	4	4						
18	1	26117-100702	BOLT M10X 70 PLATED	1	1						
19	1	22137-100000	WASHER, 10	2	2						
20	1	26051-100002	NUT, M10	1	1						

Remarks

- (1)REF. NO.4 HAS L=20 MM WHILE REF. NO.4-1 HAS L=15 MM.
- (2)REF. NO.3 HAS D=42 MM WHILE REF. NO.3-1 HAS D=32 MM.

Fig.6. HANDLE

6. HANDLE



Remarks

(1)EXCLUSIVE PARTS FOR MCG91-PQ
 (2)EXCLUSIVE PARTS FOR MCG91-PQR
 * REF. NO.15 IS PROVIDED WITH CIRCLE-MARKED PARTS WHILE REF.NO.15-1 IS NOT PROVIDED WITH THE CIRCLE-MARKED

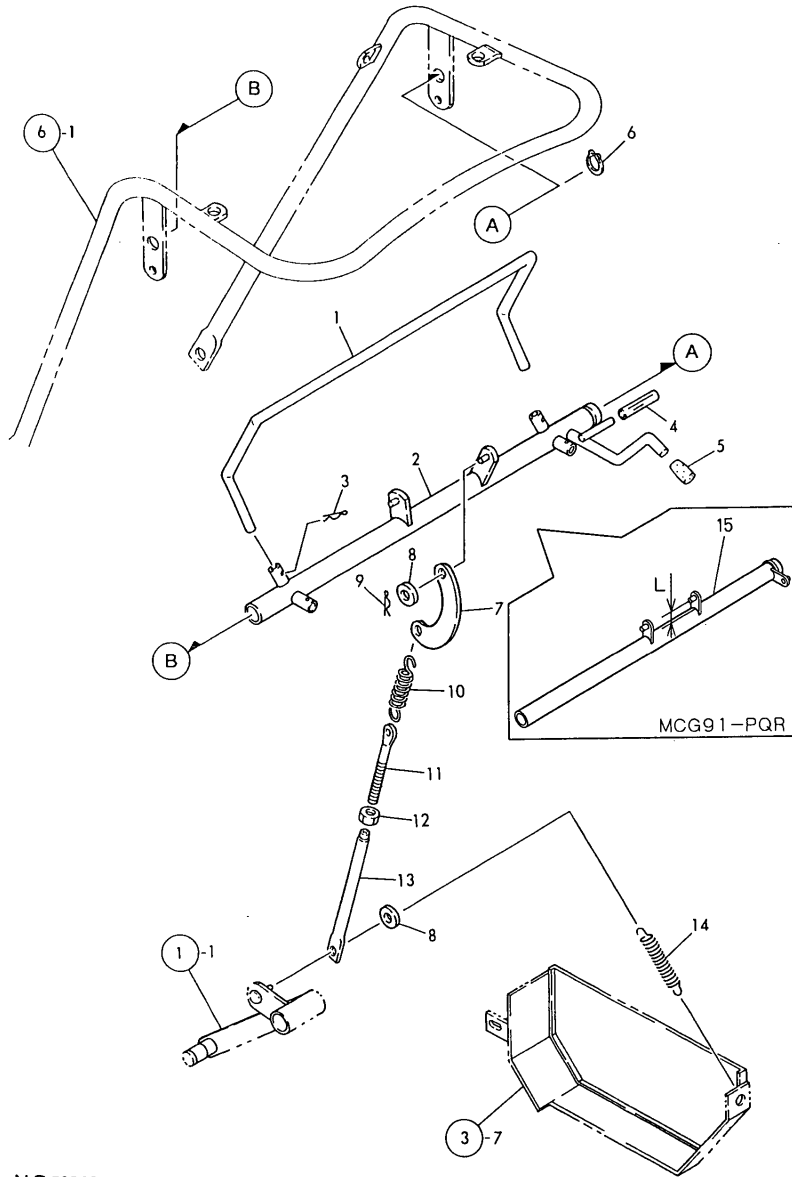
(A)=MCG91(-PQ(R
 (B)=MCG91(-PQ(MC2
 (C)=

(D)=
 (E)=
 (F)=

No.	Lev.	Parts No.	Description	Q'ty						I	R
				(A)	(B)	(C)	(D)	(E)	(F)		
1	1	1N3501-47000	HANDLE A	1							
1-1	1	1N3501-47000-1	HANDLE A	1							S
(A=F017864)											
2	1	26018-100254	BOLT M10X 25	2	2						
3	1	26367-100002	NUT, M10	2	2						
4	1	1N3501-58000	PANEL,CONTROL	1							
5	1	1N1291-58080	BOLT 6X16 W/P&SW.	8	8						
6	1	26367-060002	NUT, M6	8	8						
7	1	1A1470-40900	SWITCH,STOP	1	1						
8	1	26051-080002	NUT, M8	1	1						
9	1	1N1101-52010	WIRE,STOP LEAD	1							
9-1	1	1N3501-52000	WIRE, LEAD	1							S
(A=F018159)											
9-2	1	1N3501-52001	WIRE A,LEAD	1	1						N
(A=FXXXXXX)											
10	1	1N3501-58070	STAY,HANDLE A	1	1						
11	1	1N3501-47030	STAY	2	2						
12	1	26018-080204	BOLT M 8X 20	4	4						
13	1	26367-080002	NUT, M8	4	4						
14	1	1N1150-52000	WIRE 550,STOP LEAD	1							1
15	1	1N1291-51030	SWITCH,SAFETY	1							1
15-1	1	1N1291-51031	SWITCH,SAFETY	1							S
(A=F011748)											
16	1	1N3501-47100	HANDLE 1	1							2
16-1	1	1N3501-47101	HANDLE	1	1						S 2
(A=F025875)											
17	1	1N3501-58200	PANEL A,CONTROL	1							2
17-1	1	1N3501-58201	PANEL A,CONTROL	1	1						S 2
(A=F025875)											

Fig.7. TRAVEL LEVER

7. TRAVEL LEVER



NO 73090

Remarks

- (1) EXCLUSIVE PART FOR MCG91-PQR
- (2) REF. NO. 15 HAS L=23 MM WHILE REF. NO. 15-1 HAS L=30 MM.

(A)=MCG91(-PQ(R)
 (B)=MCG91(-PQ(MC2)
 (C)=

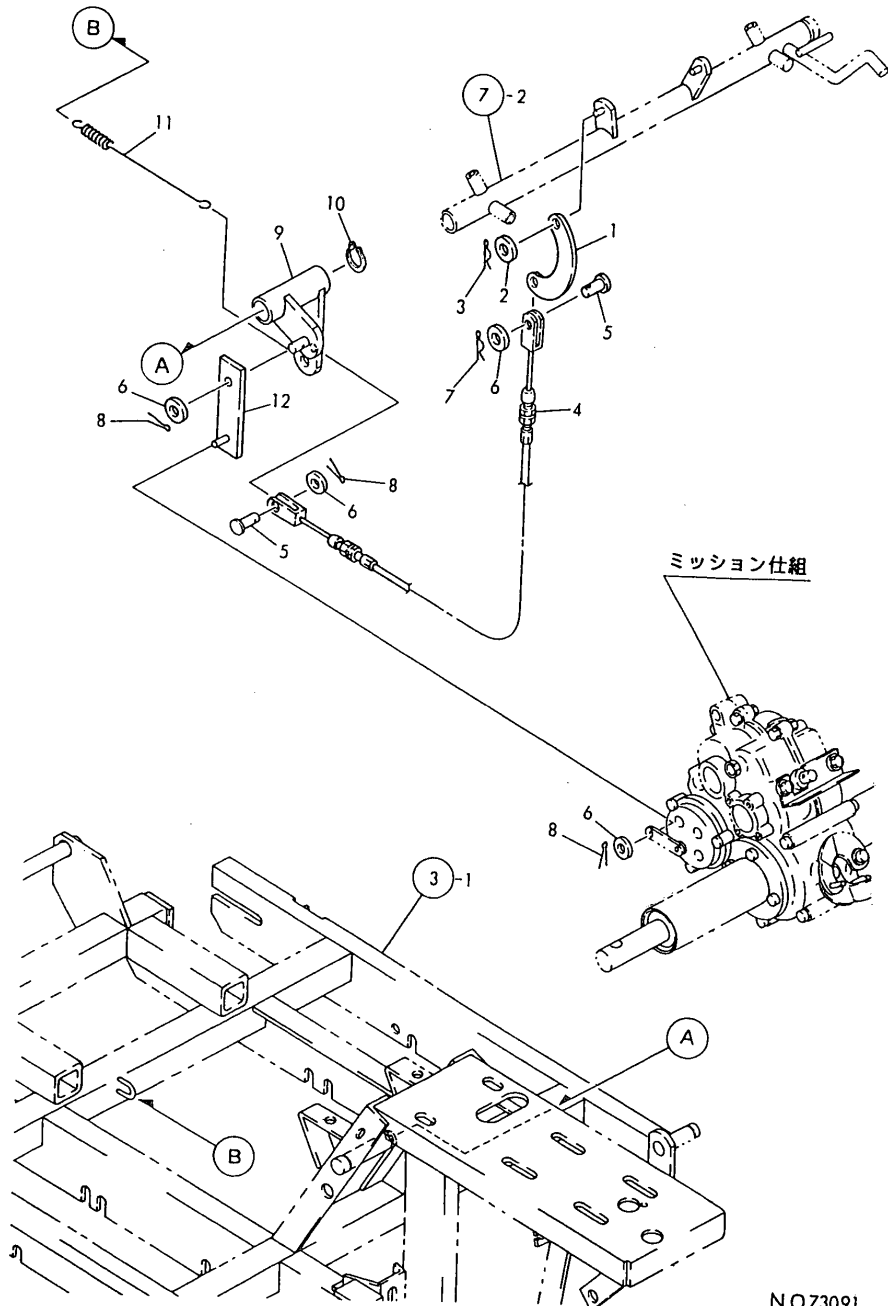
(D)=
 (E)=
 (F)=

No.	Lev.	Parts No.	Description	Qty						I	R
				(A)	(B)	(C)	(D)	(E)	(F)		
1	1	1N3501-42020	LEVER, CLUTCH BRAKE	1							
2	1	1N3501-42000	LINK, CLUTCH BRAKE	1							
3	1	22360-160000	PIN, SNAP 16	2							
4	1	1N1277-42270	HOSE, VINYL	1	1						
5	1	1N3500-44000	GRIP, RED	1							
6	1	22242-000250	RING, 25	1	1						
7	1	1N1240-42050	LINK, CRESCENT	1	1						
8	1	22137-080000	WASHER, 8	2	2						
9	1	22360-080000	SNAP PIN 8	1	1						
10	1	1N1210-53030	SPRING 21.5X78, TENS.	1	1						
11	1	1N1360-22090	SCREW 8X94, ADJUST	1	1						
12	1	26757-080002	NUT, LOCK M8	1	1						
13	1	1N1480-42170	ROD	1	1						
14	1	1N1190-45000	SPRING 11X72.5, TENS.	1	1						
15	1	1N3501-42090	LINK, CLUTCH BRAKE(A	1							1
15-1	1	1N3501-42091	LINK A, CLUTCH BRAKE	1	1						S 2

(A=F018670)

Fig.8. BRAKE LEVER

8 . BRAKE LEVER



(A)=MCG91(-PQ(R)
 (B)=MCG91(-PQ(MC2)
 (C)=

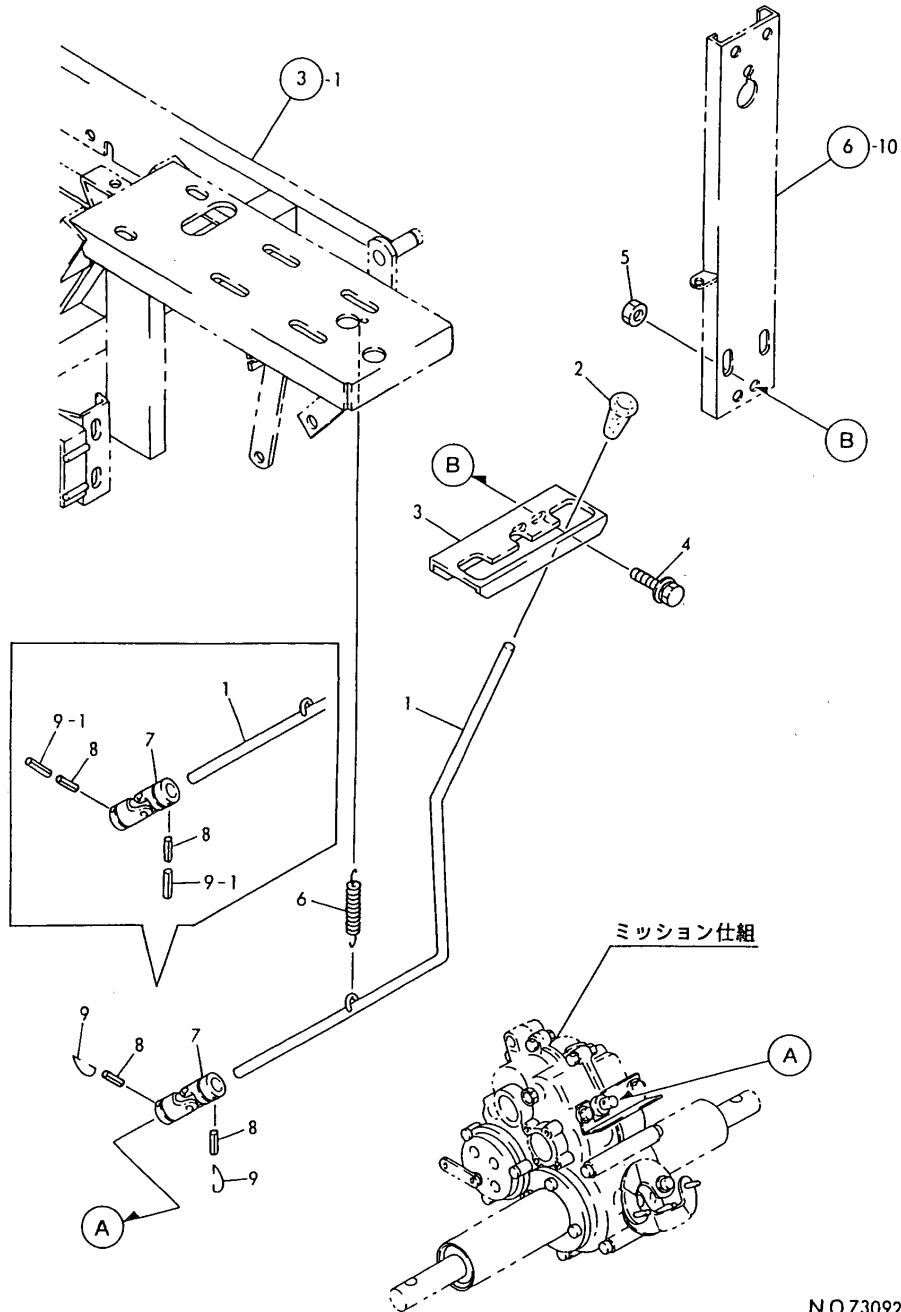
(D)=
 (E)=
 (F)=

No.	Lev.	Parts No.	Description	Q'ty						I	R
				(A)	(B)	(C)	(D)	(E)	(F)		
1	1	1N1240-42050	LINK,CRESCENT	1	1						
2	1	22137-080000	WASHER, 8	1	1						
3	1	22360-080000	SNAP PIN 8	1	1						
4	1	1N3501-51000	WIRE,CONTROL	1	1						
5	1	1N1215-51000	PIN 6X16,RIVET	2	2						
6	1	22137-060000	WASHER, 6	4	4						
7	1	22361-060000	SNAP PIN 6	1	1						
8	1	22417-200160	PIN, COTTER 2.0X16	3	3						
9	1	1N3501-42030	LINK, BRAKE	1	1						
10	1	22242-000160	RING, 16	1	1						
11	1	1N1293-53000	SPRING,BRAKE RETURN	1							
11-1	1	1N1293-53010	SPRING, RETURN	1	1						N
(A=FXXXXXX)											
12	1	1N3500-42130	RODE A,BRAKE	1	1						

NO73091

Fig.9. MAIN CHANGE LEVER

9. MAIN CHANGE LEVER



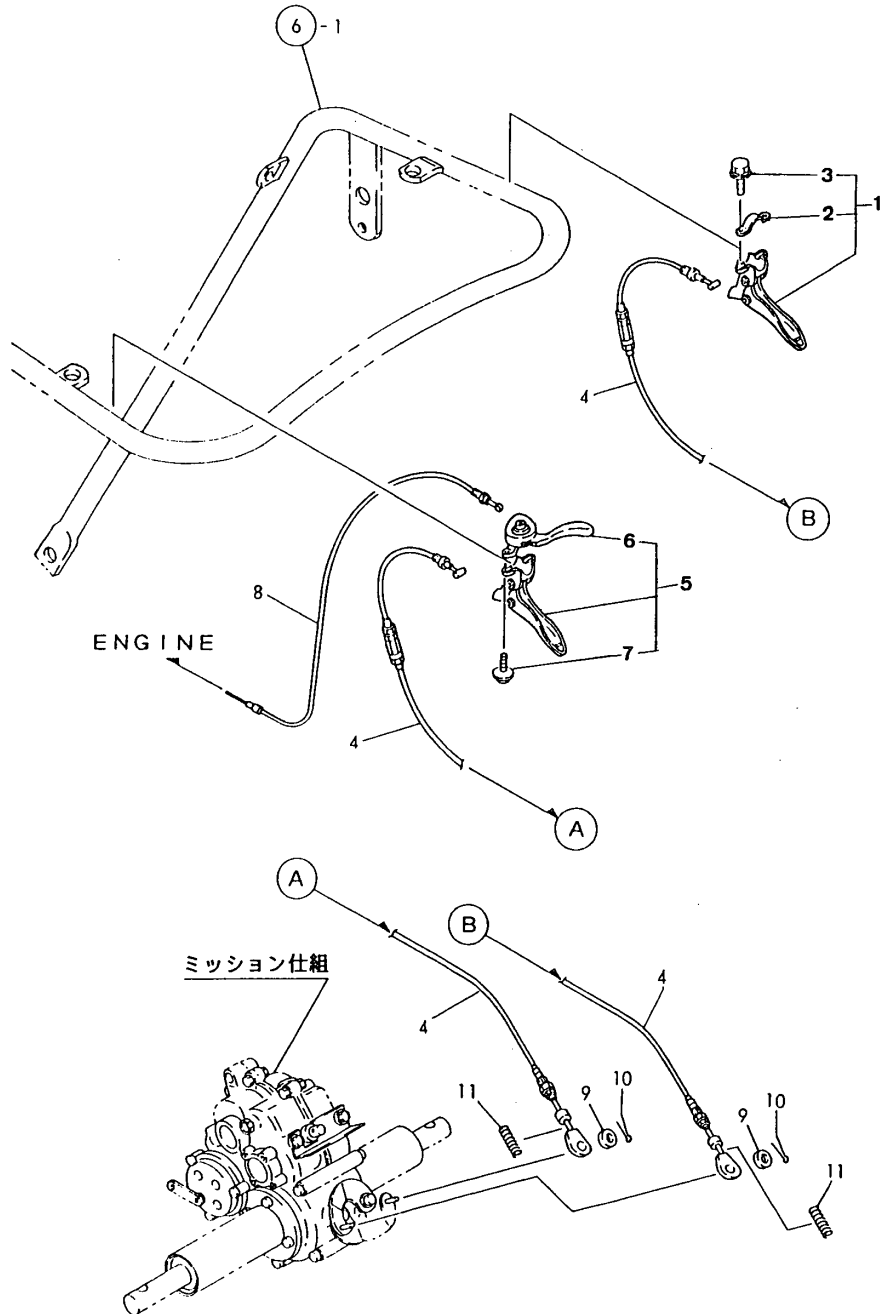
(A)=MCG91(-PQ(R)
 (B)=MCG91(-PQ(MC2)
 (C)=

(D)=
 (E)=
 (F)=

No.	Lev.	Parts No.	Description	Q'ty						I	R
				(A)	(B)	(C)	(D)	(E)	(F)		
1	1	1N3500-41010	LEVER A,CHANGE	1	1						
2	1	1N1101-44010	GRIP 10,CLUTCH	1	1						
3	1	1N3501-41000	GUIDE A,CHANGE	1	1						
4	1	1N1291-58080	BOLT 6X16 W/P&SW.	2	2						
5	1	26367-060002	NUT, M6	2	2						
6	1	1N1366-53000	SPRING 12.5X34.5,TNS	1	1						
7	1	1N3500-41000	JOINT 12X14,UNIVERSL	1	1						
8	1	22351-050030	PIN, SPRING 5.0X30	2	2						
9	1	1N1185-41010	CIRCLIP,CHANGE	2							
9-1	1	22351-030030	PIN, SPRING 3.0X30	2	2						S
(A=F011135)											

Fig.10. SIDE CLUTCH LEVER

10. SIDE CLUTCH LEVER



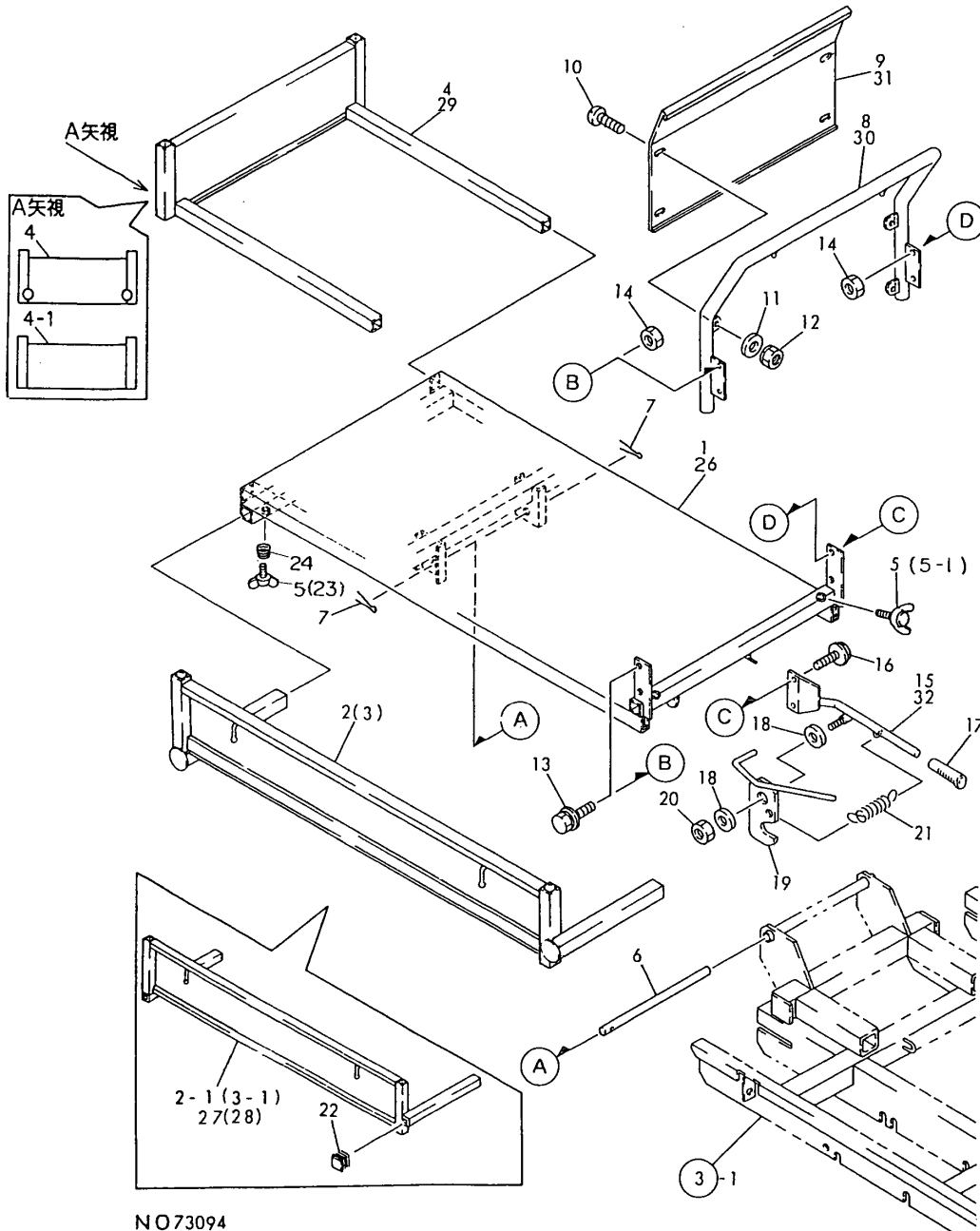
(A)=MCG91(-PQ(R
(B)=MCG91(-PQ(MC2
(C)=

(D)=
(E)=
(F)=

No.	Lev.	Parts No.	Description	Q'ty						I	R
				(A)	(B)	(C)	(D)	(E)	(F)		
1	1	1E4490-51700	LEVER CMP.,SD.CLUTCH	1							
1-1	1	1E1140-51040 (A=F026887) (B=F026887)	LEVER	1	1						S
2	2	1N3500-51030 (A=F026887)	BAND 25.4	1							Z
3	2	26014-060259	BOLT, M6X 25	2							
3-1	2	26014-060309 (A=F026887) (B=F026887)	BOLT, M6X 30	2	2						S
4	1	1N3500-51000	WIRE L,SIDE CLUTCH	2							1
4-1	1	1N3500-51001 (A=F025510)	WIRE, SIDE CLUTCH	2							N
4-2	1	1N3500-51002 (A=FXXXXXX)	WIRE, SIDE CLUTCH	2							N
4-3	1	1N3500-51003 (A=F026887) (B=F026887)	WIRE, SIDE CLUTCH	2	2						S
5	1	1E4490-51730	LEVER R CMP,SD.CLTCH	1							
5-1	1	1N3500-51060 (A=F026887) (B=F026887)	LEVER, SIDE CLUTCH	1	1						S
6	2	1E4490-51760	LEVER, ACCELERATOR	1	1						
7	2	26014-060259	BOLT, M6X 25	2							
7-1	1	1N3500-51070 (A=F026887) (B=F026887)	SCREW, M6X35	2	2						S
8	1	1N1291-51000	WIRE,THROTTLE	1	1						
9	1	22137-060000	WASHER, 6	2	2						
10	1	22417-200160	PIN, COTTER 2.0X16	2	2						
11	1	1N1285-42160 (A=F011660)	SPRING 11X65,COMPRES	2							W 1
11-1	1	1N1285-42160 (A=FXXXXXX)	SPRING 11X65,COMPRES	2							Z
12	1	7N3500-51000	WIRE,SIDE	2							1
12-1	1	7N3500-51001 (A=F025510)	WIRE,SIDE	2							N
12-2	1	7N3500-51001 (A=FXXXXXX)	WIRE,SIDE	2							Z
13	1	1N3500-51080 (A=F026887)	WASHER, SPRING 6	2	2						W

Fig.11. PLATFORM CARRIER

11. PLATFORM CARRIER



NO73094

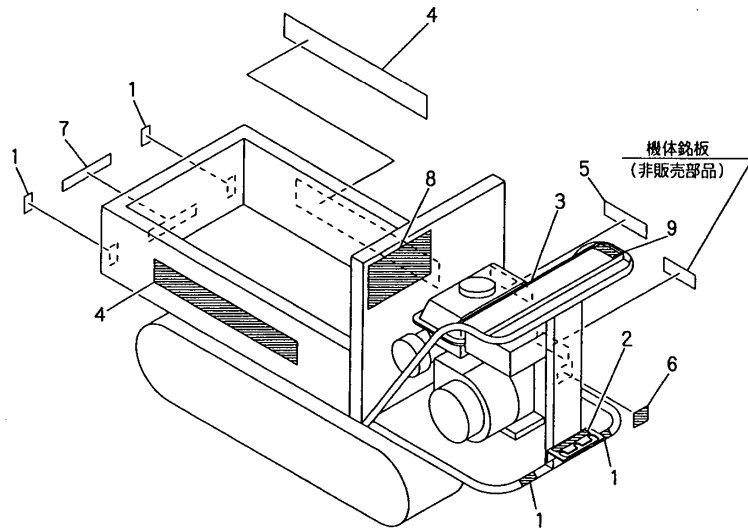
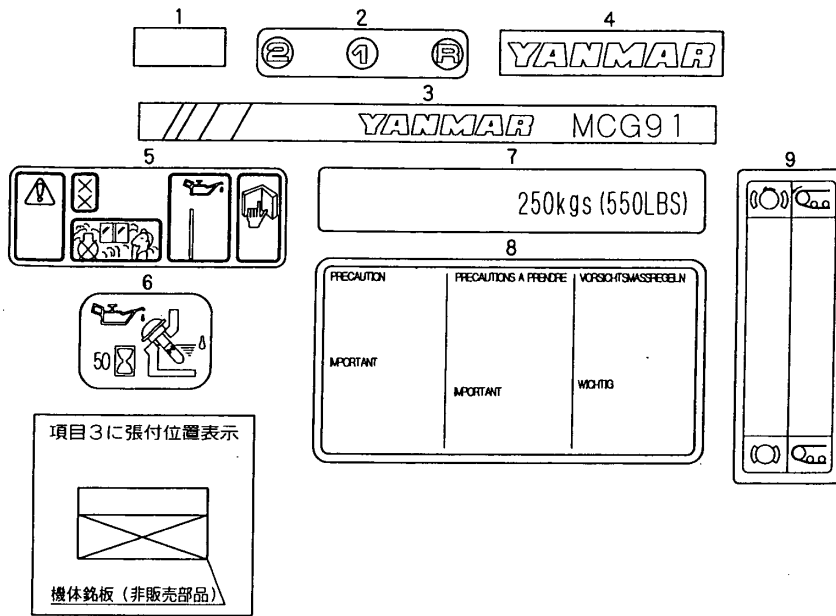
(A)=MCG91(-PQ(R)
(B)=MCG91(-PQ(MC2)
(C)=

(D)=
(E)=
(F)=

No.	Lev.	Parts No.	Description	Qty						I	R
				(A)	(B)	(C)	(D)	(E)	(F)		
1	1	1N3501-64000	CARRIER,PLATFORM	1							
2	1	1N3500-65001	PLATE L,SIDE	1							
2-1	1	1N3500-65002	PLATE L,SIDE	1							S
(A=F010452)											
3	1	1N3500-65011	BOARD R,SIDE	1							
3-1	1	1N3500-65012	SIDE PLATE R	1							S
(A=F010452)											
4	1	1N1291-65240	PLATE,FRONT	1							
4-1	1	1N1291-65241	PLATE,FRONT	1							S
(A=F010452)											
5	1	26647-100202	BOLT, WING M10X20	6							
5-1	1	26647-100202	BOLT, WING M10X20	2	2						K
(A=FXXXXXX)											
6	1	1N3501-64020	PIN,FULCRUM	1	1						
7	1	22417-400300	PIN, COTTER 4.0X30	2	2						
8	1	1N3501-66000	PLATE,BACK	1							
9	1	1N3501-66020	PLATE,BACK	1							
10	1	26557-060162	SCREW M 6X 16	4	4						
11	1	22137-060000	WASHER, 6	4	4						
12	1	26051-060002	NUT, M6	4	4						
13	1	26018-080204	BOLT M 8X 20	2	2						
14	1	26367-080002	NUT, M8	4	4						
15	1	1N3501-64010	LEVER,DUNP	1							
16	1	26018-080254	BOLT M 8X 25	2	2						
17	1	1N1101-44000	GRIP,SIDE CLUTCH	1	1						
18	1	22137-120000	WASHER, 12	2	2						
19	1	1N3500-64110	LEVER, LOCK	1	1						
20	1	26347-120002	NUT, M12	1	1						
21	1	1N1151-53000	SPRING 12.5X54,TENS.	1	1						
22	1	1N1520-53020	PLUG 25J,SQUARE OIL	4	4						W
(A=F010452)											
23	1	26647-100302	BOLT 10X30,WING	4	4						W
(A=FXXXXXX)											
24	1	1N1151-53020	SPRING 10.5X25,COMPR	4	4						W
(A=FXXXXXX)											
25	1	1N3504-64000	BAR, BODY SUPPORT	1	1						W
(A=F025875)											
26	1	1N3501-64430	CARRIER	1							W
27	1	1N3501-65090	PLATE L,SIDE	1							W
28	1	1N3501-65080	PLATE R,SIDE	1							W
29	1	1N3501-66150	PLATE,FRONT	1							W
30	1	1N3501-66170	PIPE,BACK	1							W
31	1	1N3501-66180	PLATE,BACK	1							W
32	1	1N3501-64490	LEVER,DUMP	1							W

Fig.12. LABELS

12. LABELS



(A)=MCG91(-PQ(R)
(B)=MCG91(-PQ(MC2)
(C)=

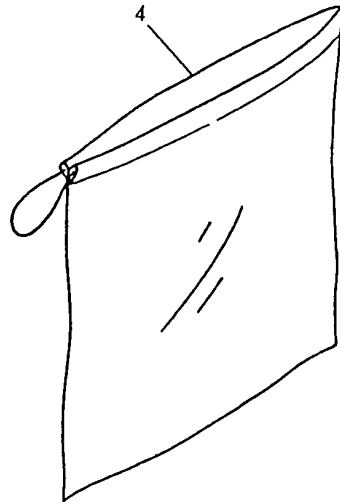
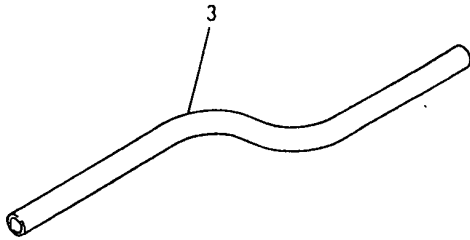
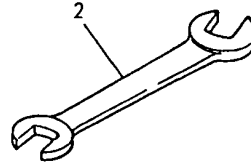
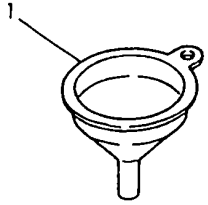
(D)=
(E)=
(F)=

No.	Lev.	Parts No.	Description	Q'ty						I	R
				(A)	(B)	(C)	(D)	(E)	(F)		
1	1	1N1070-93050	TAPE, REFLECTIVE	4							Z
2	1	1N3500-93040	LABEL, CHANGE	1							
3	1	1N3501-93000	NAMER MCG91, MAIN	1							
4	1	1N1313-93030	NAMER, SIDE	2							
5	1	1N1362-93060	LABEL, PQ-1	1							
6	1	1N3507-93160	LEVEL, OIL	1							
7	1	1N3500-93160	LABEL	1							
8	1	1N1362-93140	LABEL, PQ-9	1							
9	1	1N1362-93250	LABEL, PQ-20	1							

Remarks
(1)GROUP NO.12 EXCLUSIVE PARTS
FOR MCG91-PQ

Fig.13. TOOLS & ACCESSORIES

13. TOOLS & ACCESSORIES



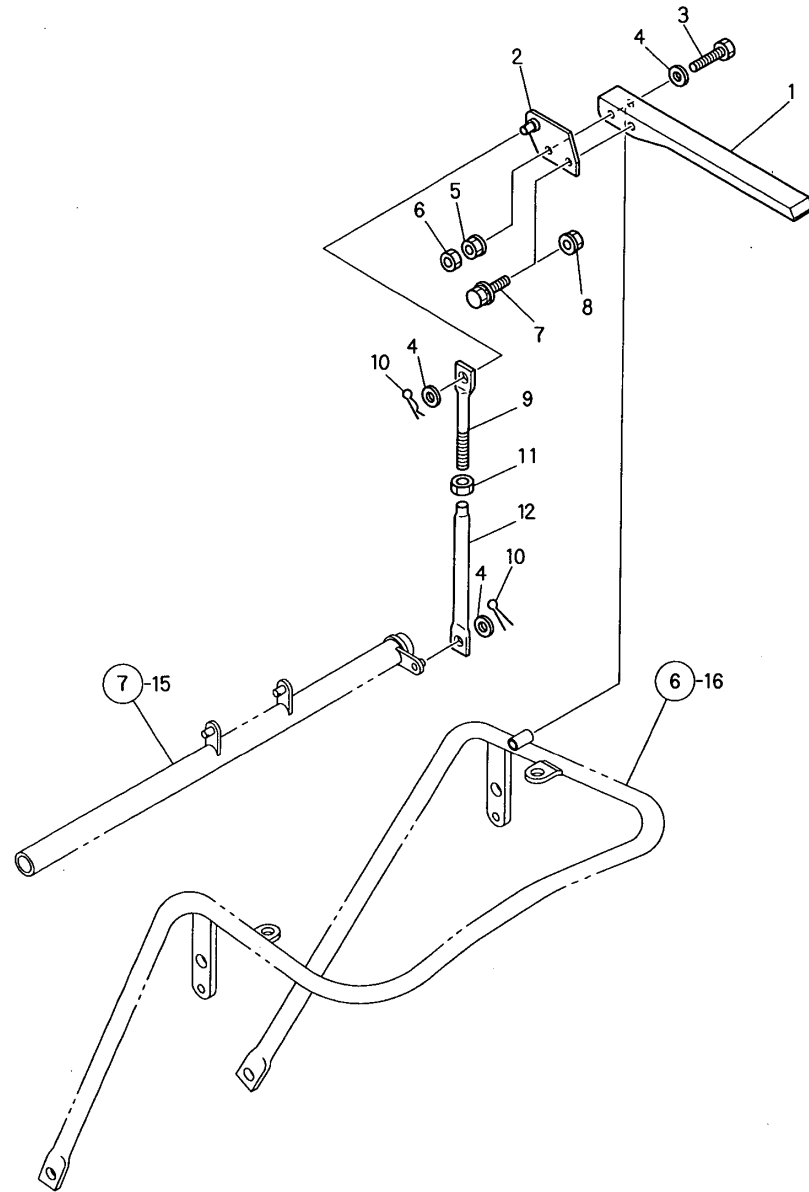
(A)=MCG91(-PQ(R
(B)=MCG91(-PQ(MC2
(C)=

(D)=
(E)=
(F)=

No.	Lev.	Parts No.	Description	Q'ty						I	R
				(A)	(B)	(C)	(D)	(E)	(F)		
1	1	1N1070-91010 (A=F025431)	FUNNEL	1							Z
2	1	1N1070-91050 (A=F025431)	WRENCH 17X19	1							Z
3	1	1N1070-91020 (A=F025431)	HOSE	1							Z
4	1	1N1070-91090 (A=F025431)	BAG,TOOL	1							Z
5	1	1N3501-95100	OPERATION MANUAL	1							
5-1	1	1N3501-95101 (A=FXXXXXX)	OPERATION MANUAL	1	1						N
5-2	1	1N3501-95102 (A=F027628)	OPERATION MANUAL (B=F027628)	1	1						S

Fig.14. DEADMAN LEVER(ADD.ITEM

14. DEADMAN LEVER(ADD.ITEM



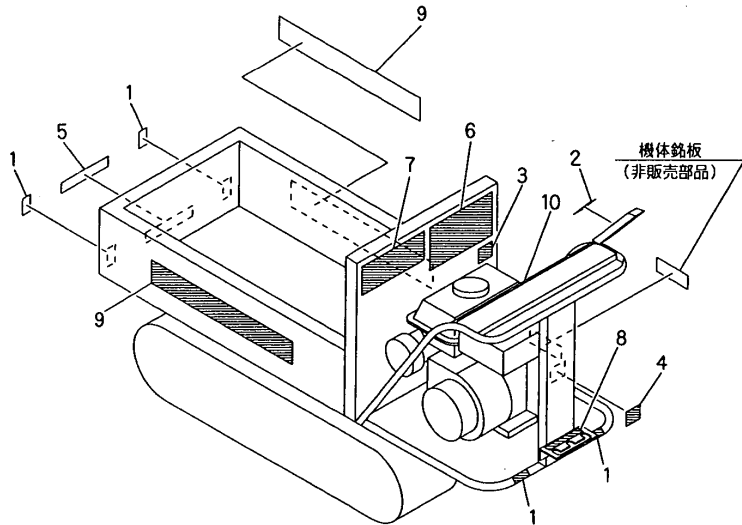
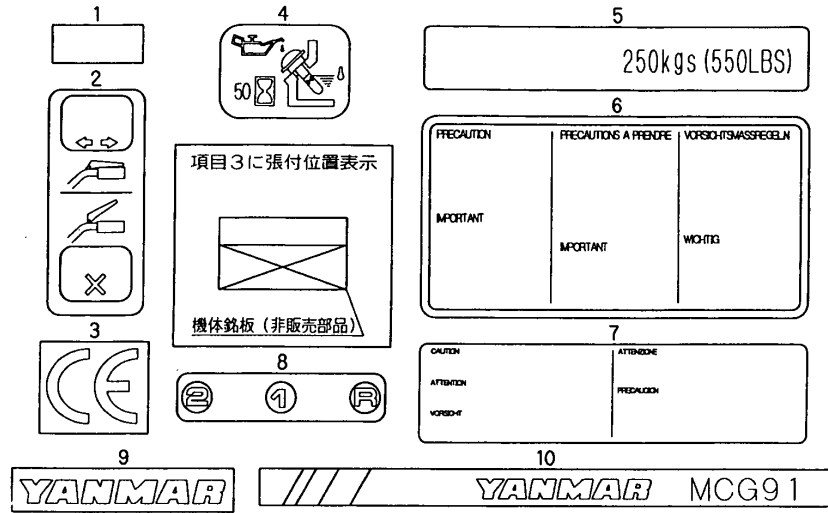
(A)=MCG91(-PQ(R
 (B)=MCG91(-PQ(MC2
 (C)=
 (D)=
 (E)=
 (F)=

No.	Lev.	Parts No.	Description	Q'ty						I	R
				(A)	(B)	(C)	(D)	(E)	(F)		
1	1	1N1723-31360	LEVER,DEADMAN	1	1						
2	1	1N3501-42100	BRACKET A ,LEVER	1	1						
3	1	26116-080552	BOLT, M8X 55 PLATED	1	1						
4	1	22137-080000	WASHER, 8	4	4						
5	1	26347-080002	NUT, M8	1	1						
6	1	26757-080002	NUT, LOCK M8	1	1						
7	1	26018-080204	BOLT M 8X 20	1	1						
8	1	26367-080002	NUT, M8	1	1						
9	1	1N1360-22090	SCREW 8X94,ADJUST	1							
9-1	1	1N3506-42160	SCREW M8X60,ADJUST	1	1						S
		(A=F019016)									
10	1	22360-080000	SNAP PIN 8	1	1						
11	1	26757-080002	NUT, LOCK M8	1	1						
12	1	1N1270-22132	ROD B,CLUTCH CONNECT	1	1						
13	1	22417-250200	PIN, COTTER 2.5X20	1	1						

Remarks
 * GROUP NO.14 EXCLUSIVE PARTS
 FOR MCG91-PQR

Fig.15. LABELS(ADD.ITEM)

15. LABELS(ADD. ITEM)



Remarks
 (1)GROUP NO.15 EXCLUSIVE PARTS
 FOR MCG91-PQR

(A)=MCG91(-PQ(R)
 (B)=MCG91(-PQ(MC2)
 (C)=

(D)=
 (E)=
 (F)=

No.	Lev.	Parts No.	Description	Q'ty						I	R
				(A)	(B)	(C)	(D)	(E)	(F)		
1	1	1N1070-93050 (A=FXXXXXX)	TAPE, REFLECTIVE	4							Z
2	1	1N3506-93260	LABEL, CLUTCH	1	1						
3	1	1N3507-93060 (A=F026282)	DECAL, HYD. CONTROL	1							Z
4	1	1N3507-93160	LEVEL, OIL	1	1						
5	1	1N3500-93160	LABEL	1							
5-1	1	1N1340-93280 (A=F026454)	LABEL, CARRY CAPACITY	1	1						S
6	1	1N1362-93140 (A=F025120)	LABEL, PQ-9	1							Z
7	1	1N3507-93090 (A=F025120)	DECAL, HYD. CONTROL	1							Z
8	1	1N3500-93040	LABEL, CHANGE	1	1						
9	1	1N1313-93030	NAMER, SIDE	2	2						
10	1	1N3501-93000	NAMER MCG91, MAIN	1	1						
11	1	1N3544-93310 (A=F021093)	LABEL	1							W
12	1	1N3544-93320 (A=F021093)	LABEL	1							W
13	1	1N3544-93330 (A=F021093)	LABEL	1							W
14	1	1N3544-93340 (A=F021093)	LABEL	1							W
15	1	1N3544-93350 (A=F021093)	LABEL	1							W
16	1	1N3544-93360 (A=F025120)	LABEL	1							W
17	1	1N3503-93310 (A=FXXXXXX)	LABEL 95DB, NOISE	1	1						W
17-1	1	1N3504-93180 (A=F027628) (B=F027628)	LABEL 98DB, NOISE	1	1						S
18	1	1N3563-93020 (A=F026282)	LABEL, SAFETY	1	1						W
19	1	1N3563-93050 (A=F026282)	LABEL, SAFETY	1	1						W
20	1	1N3501-93170 (A=F026983)	MARK	1	1						W

Parts No. Index

Parts No.	Fig. No.	Ref. No.
1A1470-40900	6	7
1E1140-51040	10	1 -1
1E4490-51700	10	1
1E4490-51730	10	5
1E4490-51760	10	6
1N1070-91010	13	1
1N1070-91020	13	3
1N1070-91050	13	2
1N1070-91090	13	4
1N1070-93050	12	1
	15	1
1N1091-36000	4	8
	5	8
1N1101-44000	11	17
1N1101-44010	9	2
1N1101-44040	3	2
		2 -1
1N1101-52010	6	9
1N1150-52000	6	14
1N1151-53000	11	21
1N1151-53020	11	24
1N1185-41010	9	9
1N1190-45000	7	14
1N1210-35100	5	15
1N1210-53030	7	10
1N1215-51000	8	5
1N1240-21040	2	9
1N1240-42050	7	7
	8	1
1N1270-22132	14	12
1N1277-42270	7	4
1N1285-42160	10	11
		11 -1
1N1291-22020	2	4
1N1291-35000	5	11
1N1291-35020	5	12
1N1291-37000	4	10
1N1291-51000	10	8
1N1291-51030	6	15
1N1291-51031	6	15 -1
1N1291-58080	3	14
	6	5
	9	4
1N1291-65240	11	4
1N1291-65241	11	4 -1
1N1292-35000	4	3
1N1292-35010	4	4
1N1293-53000	8	11
1N1293-53010	8	11 -1
1N1313-93030	12	4

Parts No.	Fig. No.	Ref. No.
1N1313-93030	15	9
1N1340-93280	15	5 -1
1N1360-22090	7	11
	14	9
1N1361-36000	5	3
1N1362-93060	12	5
1N1362-93140	12	8
	15	6
1N1362-93250	12	9
1N1366-53000	9	6
1N1430-22070	1	5
1N1480-42170	7	13
1N1520-53020	11	22
1N1550-54100	3	9
1N1723-31360	14	1
1N3500-41000	9	7
1N3500-41010	9	1
1N3500-42130	8	12
1N3500-44000	7	5
1N3500-51000	10	4
1N3500-51001	10	4 -1
1N3500-51002	10	4 -2
1N3500-51003	10	4 -3
1N3500-51030	10	2
1N3500-51060	10	5 -1
1N3500-51070	10	7 -1
1N3500-51080	10	13
1N3500-54090	3	12
1N3500-58130	3	3
1N3500-64110	11	19
1N3500-65001	11	2
1N3500-65002	11	2 -1
1N3500-65011	11	3
1N3500-65012	11	3 -1
1N3500-93040	12	2
	15	8
1N3500-93160	12	7
	15	5
1N3501-21000	2	1
1N3501-21010	2	3
1N3501-22000	1	1
1N3501-31000	3	1
1N3501-35020	4	4 -1
	5	4 -1
1N3501-35030	5	15 -1
1N3501-35040	4	3 -1
1N3501-36010	5	3 -1
1N3501-37000	4	12
1N3501-37010	4	12 -1
1N3501-41000	9	3

Parts No.	Fig. No.	Ref. No.
1N3501-42000	7	2
1N3501-42020	7	1
1N3501-42030	8	9
1N3501-42090	7	15
1N3501-42091	7	15 -1
1N3501-42100	14	2
1N3501-47000	6	1
1N3501-47000-1	6	1 -1
1N3501-47030	6	11
1N3501-47100	6	16
1N3501-47101	6	16 -1
1N3501-51000	8	4
1N3501-52000	6	9 -1
1N3501-52001	6	9 -2
1N3501-54000	3	8
1N3501-54001	3	8 -1
1N3501-54002	3	8 -2
1N3501-54030	3	16
1N3501-54040	3	17
1N3501-54041	3	17 -1
1N3501-58000	6	4
1N3501-58041	3	7
1N3501-58070	6	10
1N3501-58090	3	4
1N3501-58120	3	13
1N3501-58200	6	17
1N3501-58201	6	17 -1
1N3501-58300	3	7 -1
1N3501-64000	11	1
1N3501-64010	11	15
1N3501-64020	11	6
1N3501-64430	11	26
1N3501-64490	11	32
1N3501-65080	11	28
1N3501-65090	11	27
1N3501-66000	11	8
1N3501-66020	11	9
1N3501-66150	11	29
1N3501-66170	11	30
1N3501-66180	11	31
1N3501-93000	12	3
	15	10
1N3501-93170	15	20
1N3501-95100	13	5
1N3501-95101	13	5 -1
1N3501-95102	13	5 -2
1N3503-93310	15	17
1N3504-64000	11	25
1N3504-93180	15	17 -1
1N3506-42160	14	9 -1

Parts No.	Fig. No.	Ref. No.
1N3506-93260	15	2
1N3507-93060	15	3
1N3507-93090	15	7
1N3507-93160	12	6
	15	4
1N3510-35010	5	4
1N3544-93310	15	11
1N3544-93320	15	12
1N3544-93330	15	13
1N3544-93340	15	14
1N3544-93350	15	15
1N3544-93360	15	16
1N3563-93020	15	18
1N3563-93050	15	19
22137-060000	8	6
	10	9
	11	11
22137-080000	2	7
	7	8
	8	2
	14	4
22137-100000	3	10
		10 -1
		10 -2
	5	13
		19
22137-120000	5	9
	11	18
22242-000150	1	3
	4	6 -1
22242-000160	1	6
	8	10
22242-000170	4	6
	5	6 -1
22242-000200	5	6
22242-000250	7	6
22252-000350	1	2
22351-030030	9	9 -1
22351-050030	9	8
22360-080000	7	9
	8	3
	14	10
22360-160000	7	3
22361-060000	8	7
22417-200160	8	8
	10	10
22417-250200	14	13
22417-250250	5	14
22417-400300	11	7
22550-050251	2	11

Parts No. Index

Parts No.	Fig. No.	Ref. No.
24101-060024	4	5 -1
	5	5 -1
24101-060034	4	5
24101-060044	5	5
24104-062024	1	4
24421-153206	4	7 -1
	5	7 -1
24421-173508	4	7
24421-204208	5	7
25123-003201	2	2
26014-060259	10	3
		7
26014-060309	10	3 -1
26016-060164	2	10
26018-080164	2	5
26018-080204	3	5
		18
	6	12
	11	13
	14	7
26018-080254	11	16
26018-100254	6	2
26051-060002	11	12
26051-080002	2	8
	6	8
26051-100002	3	11
		11 -1
		11 -2
	5	20
26051-120002	4	9
		11
	5	10
26052-100002	5	16
26106-080452	2	6 -1
26116-080452	2	6
26116-080552	14	3
26117-100702	5	18
26117-101902	3	12 -1
		12 -2
26347-080002	14	5
26347-120002	11	20
26367-060002	3	15
	6	6
	9	5
26367-080002	3	6
		19
	6	13
	11	14
	14	8
26367-100002	6	3

Parts No.	Fig. No.	Ref. No.
26557-060162	11	10
26647-100202	11	5
		5 -1
26647-100302	11	23
26757-080002	7	12
	14	6
		11
26757-100002	5	17
7N1292-35000	4	2
7N1292-35010	4	1
7N3500-51000	10	12
7N3500-51001	10	12 -1
		12 -2
7N3501-35000	4	2 -1
7N3501-35010	4	1 -1
7N3501-36000	5	2 -1
7N3501-36010	5	1 -1
7N3510-36000	5	2
7N3510-36010	5	1

Parts No.	Fig. No.	Ref. No.
-----------	----------	----------

Parts No.	Fig. No.	Ref. No.
-----------	----------	----------